

Health Overview and Scrutiny Panel

ADDITIONAL INFORMATION AND PRESENTATIONS

Thursday, 25th April, 2019
at 6.00 pm

ADDITIONAL INFORMATION RELATED TO THE LISTED
REPORTS

ADDITIONAL INFORMATION AND PRESENTATIONS

- Solent NHS trust – Panel Presentation



Page 1

Regulatory update and ratings following CQC inspection

Sue Harri
Chief Executive O

25 April
Agenda Item 7

About us

Established on...

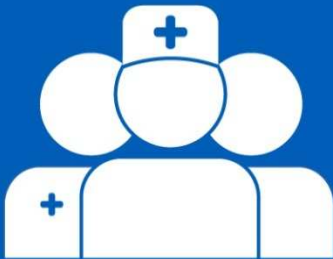


Nearly one million service user contacts

£187,000,000

Annual income for 2017-18

Page 2



4,086

We employed 4,086 clinical and non-clinical staff in 2017-18 (2,899 WTEs)



Portsmouth, Southampton and specialist services pan Hampshire



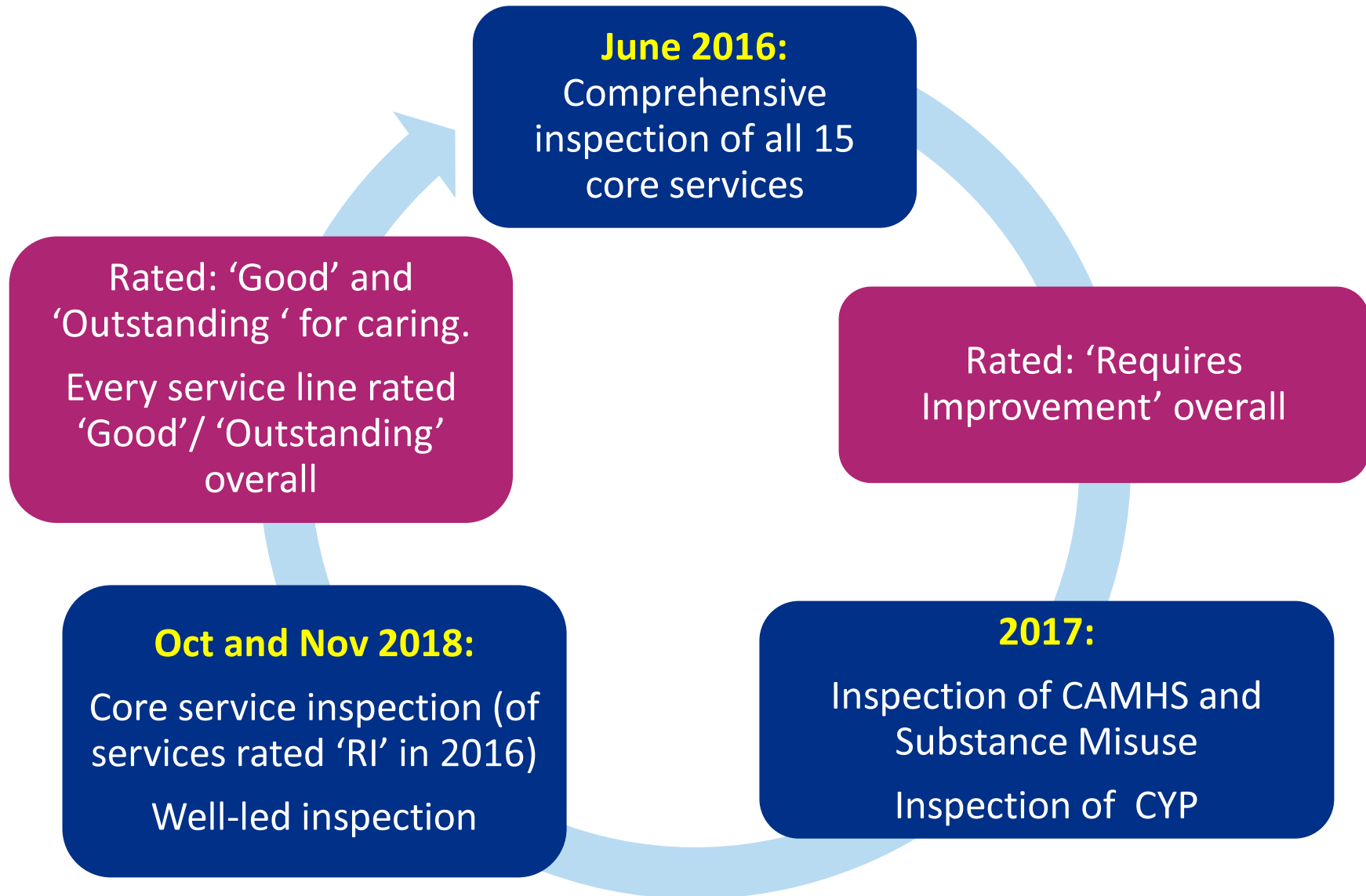
Our Strategy

At Solent NHS Trust we all share an ambitious vision to **make a difference** by keeping more people **healthy, safe** and **independent** in, or close to their own homes.

People, values and **culture** drives us. The best people, doing their best work, in pursuit of our vision. People dedicated to giving **great care** to our service users and patients, and **great value** to our partners.

We aspire to be the **partner of choice** for other service providers. With them we will **reach even more people**, and care for them through even more stages of their lives. Ultimately it is the **people** we care for who will tell us if we are successful and who **will help shape our future care**.

Our improvement journey



2016						
OVERALL	RI	RI	G	G	RI	RI
Domains	Safe	Effective	Caring	Responsive	Well Led	Overall
Community Services Rating						
CHS – Adults	RI	G	G	G	G	G
CHS - CYPF	I	RI	G	RI	RI	RI
CHS – inpatient	G	G	G	G	G	G
End of life	G	G	G	G	G	G
Sexual Health	G	G	G	G	G	G
Overall	RI	G	G	G	G	G
Mental Health Rating						
PICU	RI	G	G	G	G	G
Long stay/Rehab	RI	G	G	G	G	G
OPMH – Inpatient	RI	RI	G	G	RI	RI
CMH - AMH	G	G	G	G	G	G
MH Crisis	G	G	G	G	RI	G
CAMHS	I	RI	G	RI	RI	RI
CMH- OPMH	RI	RI	NR	G	RI	RI
LD	G	O	O	O	O	O
SMS	I	RI	G	RI	RI	RI
Overall	RI	RI	G	G	RI	RI
PMS Rating						
Adelaide	G	G	G	G	G	G

Areas of 'outstanding' practice

Clear and ambitious vision

Learning and quality improvement culture

Compliance with IG

Strong leadership and development within the organisation

The active role we take in joining up, and shaping, future care

The take up for the national Child Monitoring Programme

Results in National Institute of Health Research's annual league tables

Young Shapers: Involving young people in the development of services

Our holistic approach to physical and mental health

Southampton areas of outstanding practice

Solent Moisture
Pathway

Diabetes education
public seminars

Cerebral Palsy

Multidisciplinary
and coordinated
pathways for Stroke
patients at home.

UNICEF UK Baby
Friendly Initiative

Child at the Centre

Intervention
physiotherapy for
people with
Parkinson's Disease

'15 Steps' Challenge

Children's Palliative
Care

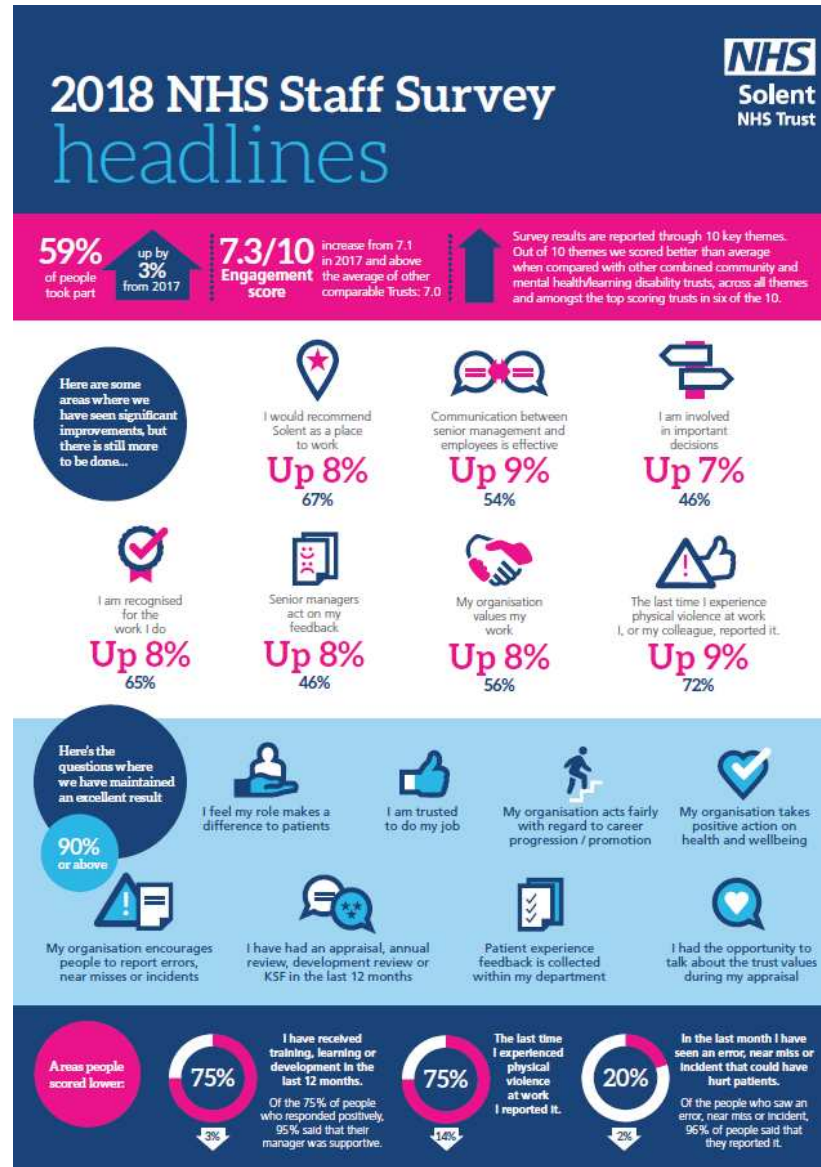
Areas for improvement

Requirement Notice for breach of Regulation 12 (2)(g):
The proper and safe management of medicines.

*One small discrete location in mental health services in
Portsmouth*

36 areas of minor breaches of regulations.
Not mandated, but positively influence Trusts to deliver
best practice.

Post inspection update: NHS Staff Survey results





Thank you and questions